

**THIS IS
ENTERPRISE
SKOPJE.
YOUR NEW
BUSINESS
PLACE.**



YOUR PERFECT WORKSPACE





ENTERPRISE
Skopje

A CITY OF DIVERSITY...





Skopje, the city that offers numerous possibilities and experiences. People, who are warm and welcoming, introducing their visitors with their rich history, traditional dish, the urban dynamic spirit and a touch with the modern life.

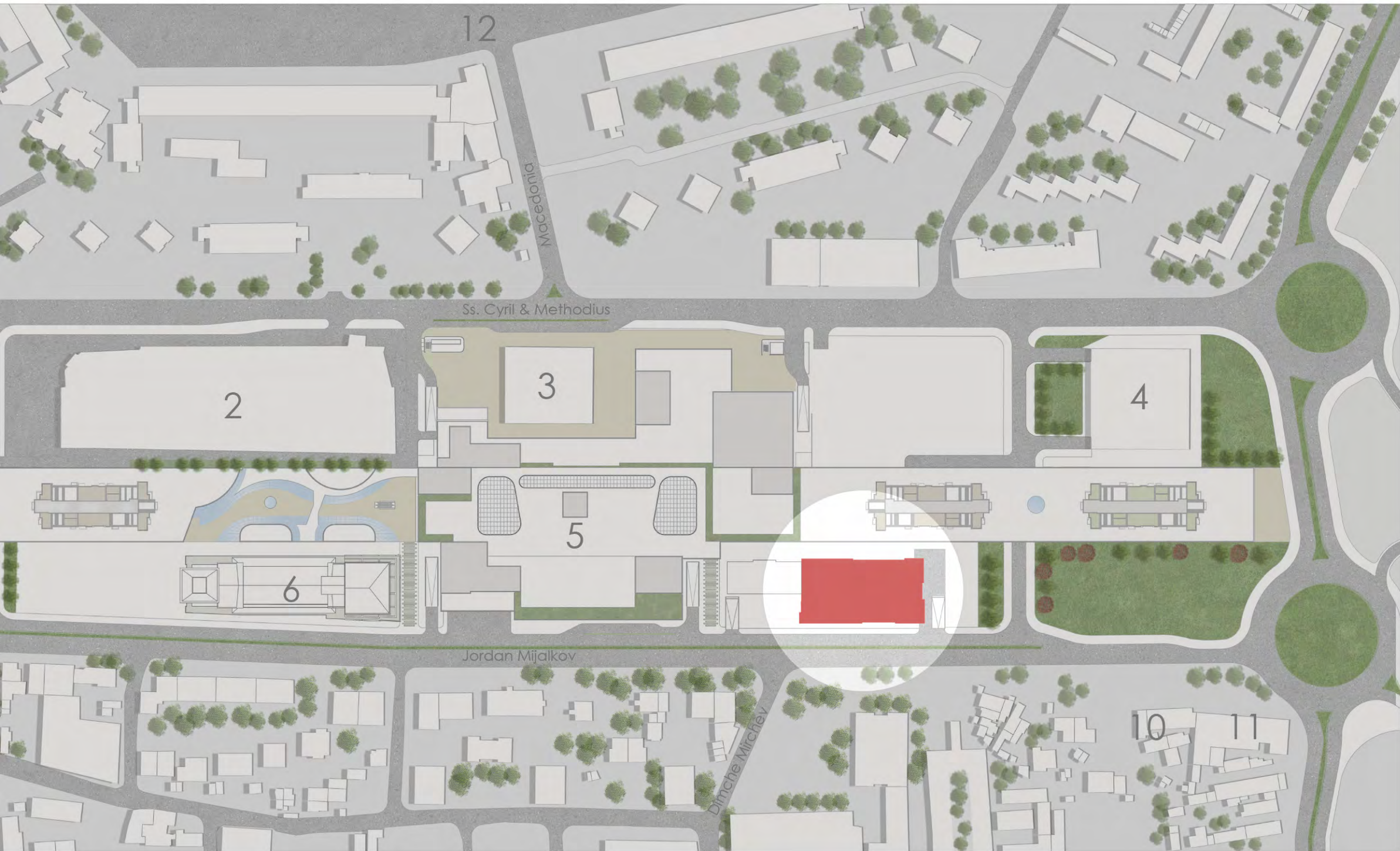
A cultural mix of diversities of old and new, nationalities and religions, functioning together in a perfect harmony. It is inevitable to meet every period that the city has gone through, from the Antics through the Middle Ages, the Ottoman period to the modern-day appearance, every period with its own mark.

THE MOST PRESTIGIOUS LOCATION

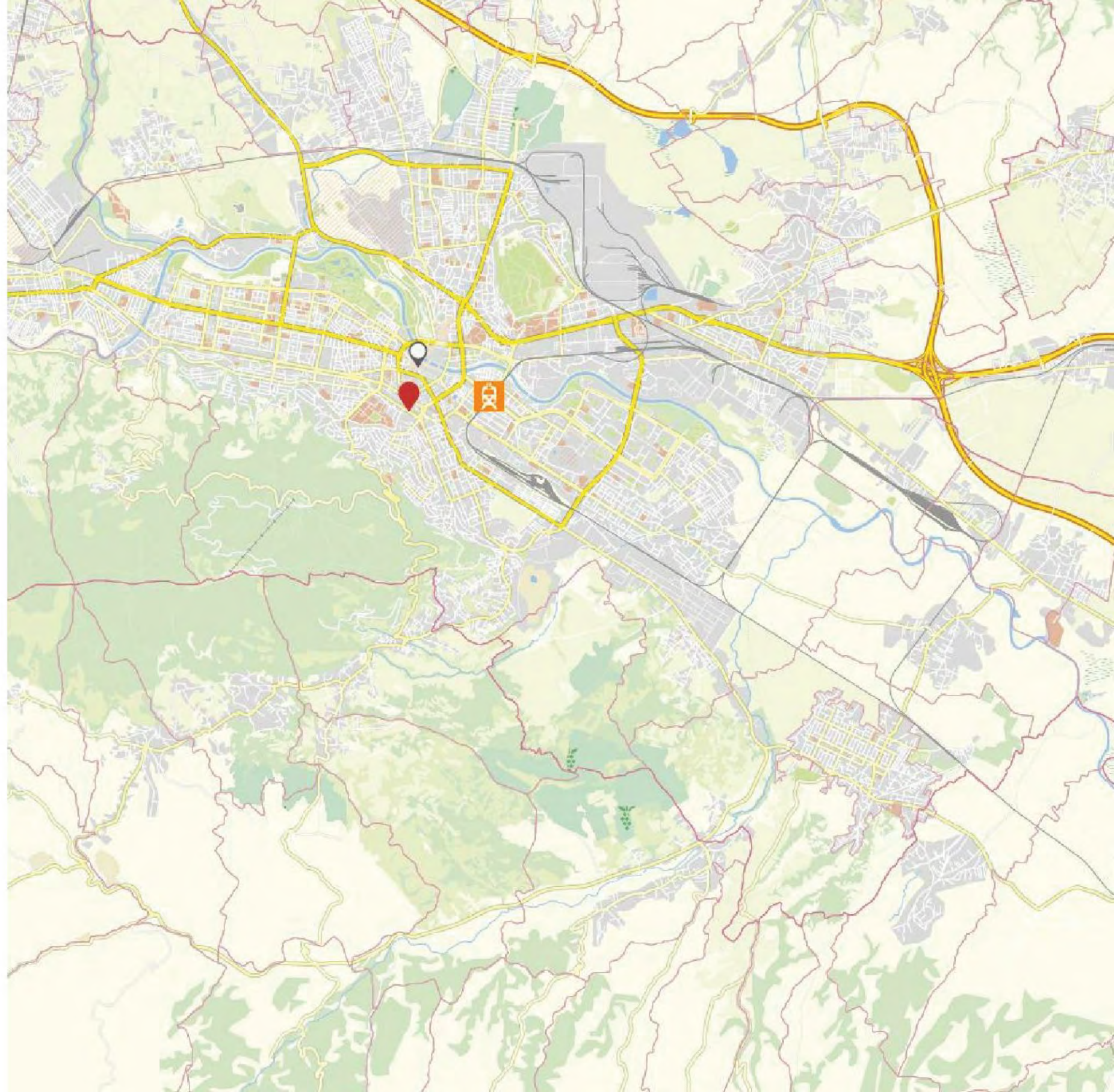
SIGNIFICANT PLACES IN THE NEARBY

1. NLB bank
2. Ramstore mall
3. Museum of the City of Skopje
4. Parking garage Ss. Cyril and Methodius
5. Diamond Skopje
6. Hotel Limak
7. Delegation of the EU
8. Ministry of Education and Science of NM
9. European University
10. Neuromedica Hospital
11. State Audit Office of NM
12. Main Square





- At 5-min drive to the Skopje Bus and railway station
- At 30-min drive to the Skopje Airport
- At 5-min walk to the Main Square





A DISTINGUISHED
LIFE

AT THE MOST
EXCLUSIVE
LOCATION IN
SKOPJE





CONCEPT INSPIRED BY

A representative lobby welcomes you from the main entrance, facing the street. It is provided easy access to the main stairs and the elevators through the lobby, housing the reception and the main circulation core.



MODERN BUSINESS STANDARDS.



FOR THOSE WHO WORK WITH GREAT ENERGY AND DEDICATION



If you are seeking for warm and pleasant workspace in the center of Skopje and its business environment, Enterprise is the place for you, offering more dynamic working atmosphere.



**IT IS MUCH MORE
EASY
TO ACHIEVE**

**A HIGH STANDARD
OF
BUSINESS LIFE**





FLOOR PLAN LEVEL -1

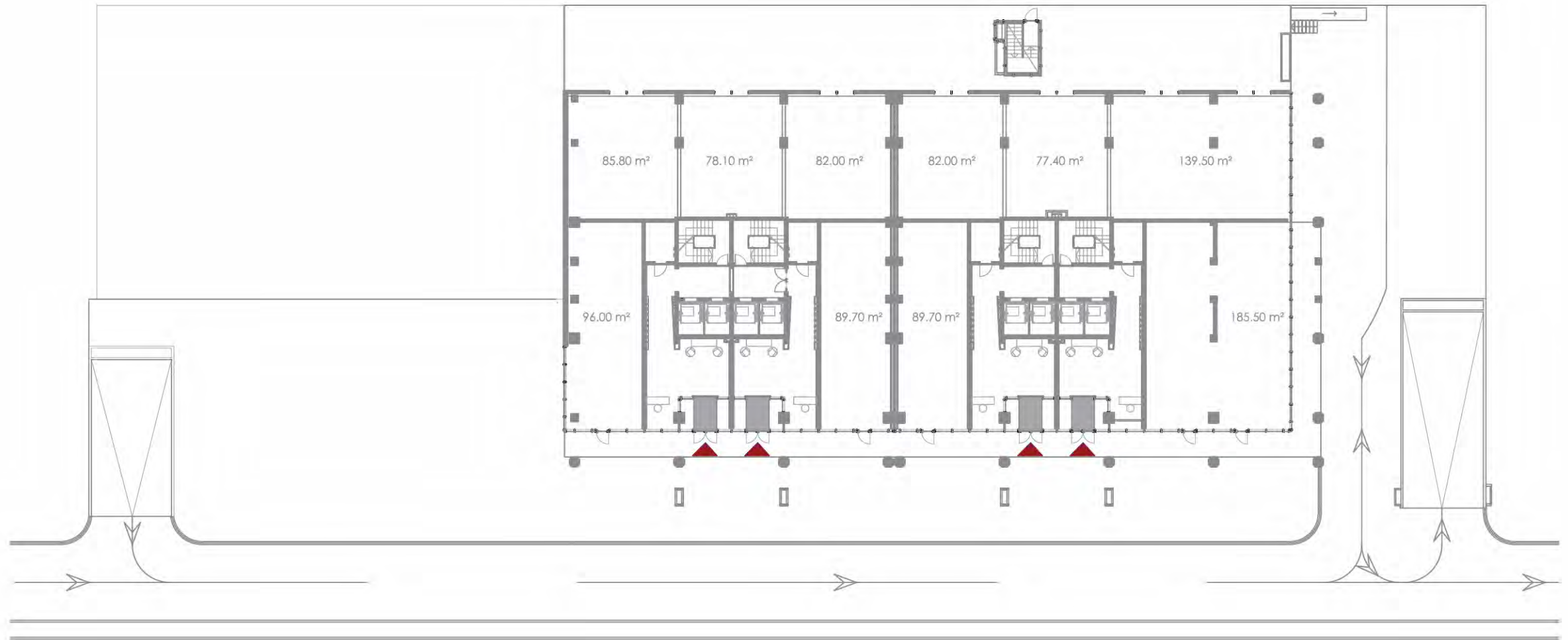
- **103** parking places
- **2** entrance ramps
- **2** exit ramps
- **11** elevators



FLOOR PLAN LEVEL -2

- **113** parking places
- **2** entrance ramps
- **2** exit ramps
- **10** elevators

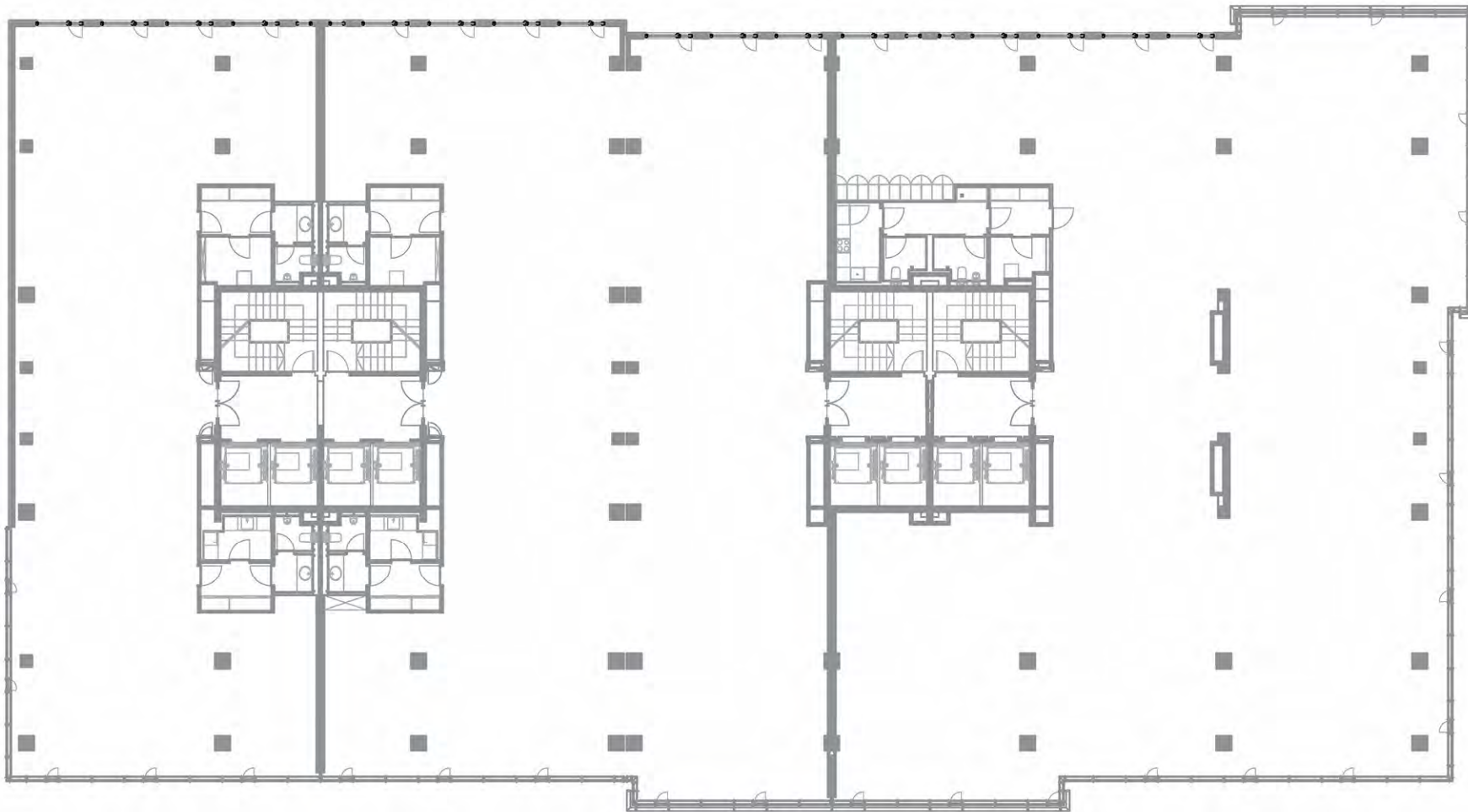
ground
floor plan



TAILOR MADE TO SUIT YOUR NEEDS

- 4 entrances
- 1005.7m² area
- 10 retail spaces

floors
1-2



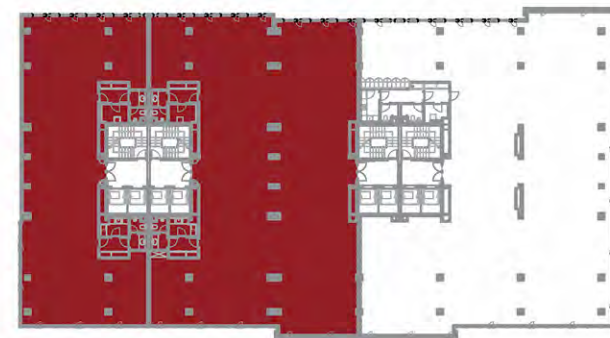
1/2 unit - cca 165 m²



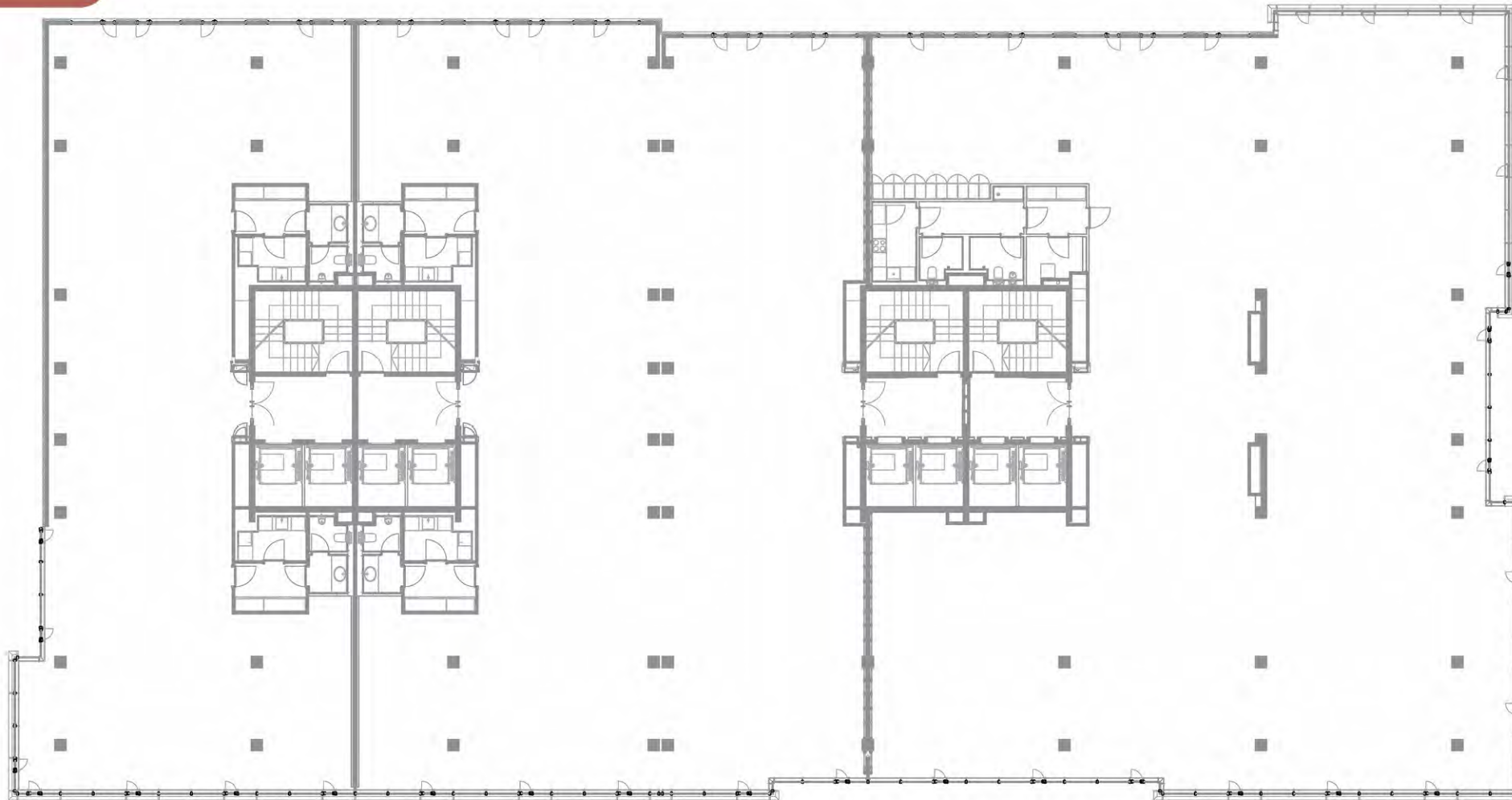
1 unit - cca 330 m²



2 units - cca 960 m²



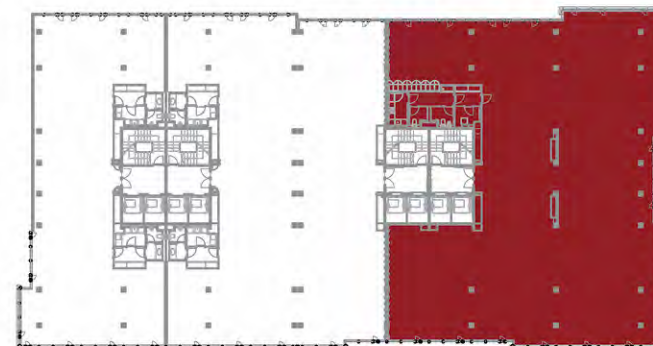
floors
3-4



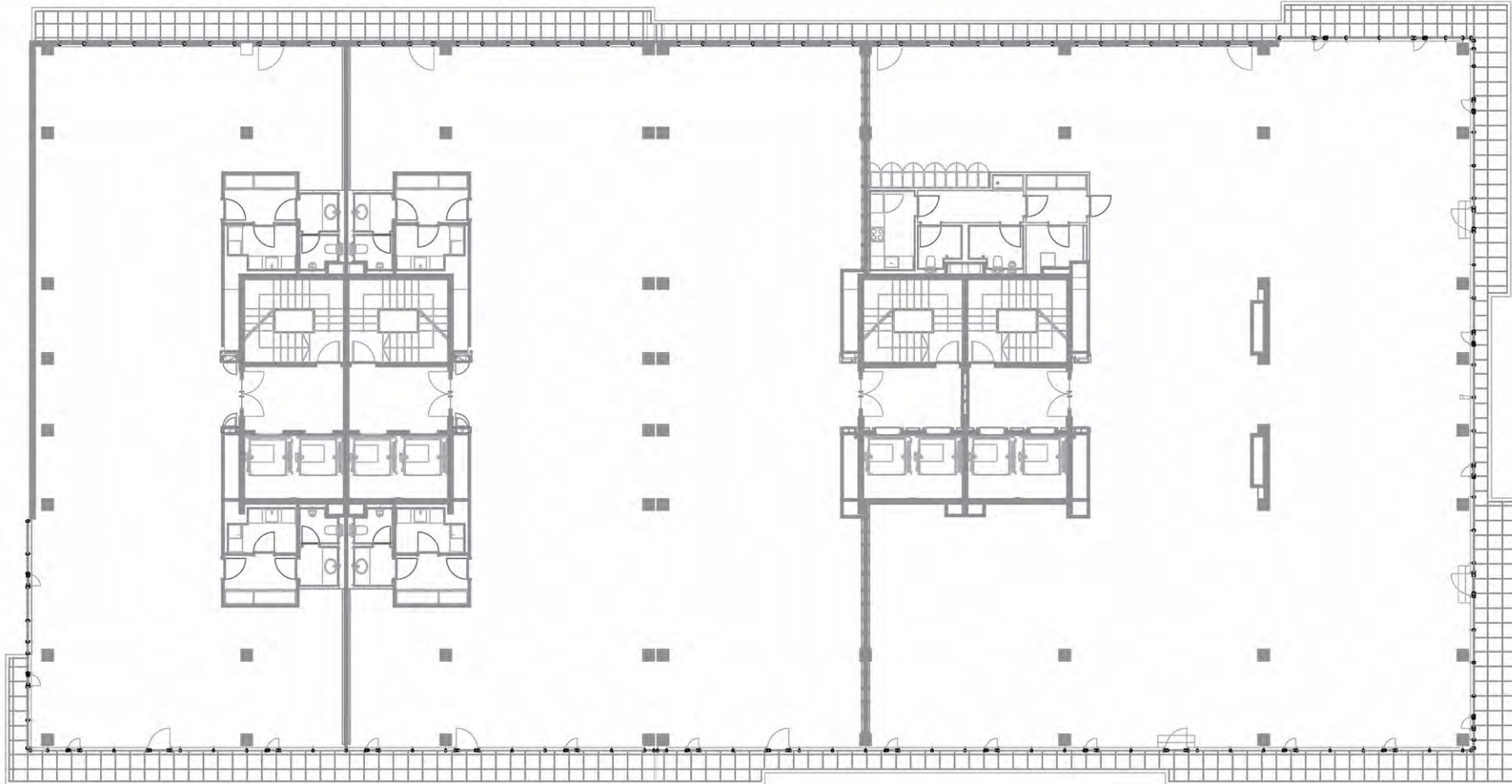
1/2 unit - cca 385 m²



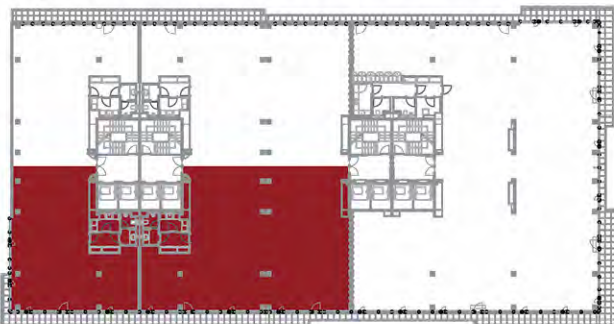
1 unit - cca 770 m²



floor
5



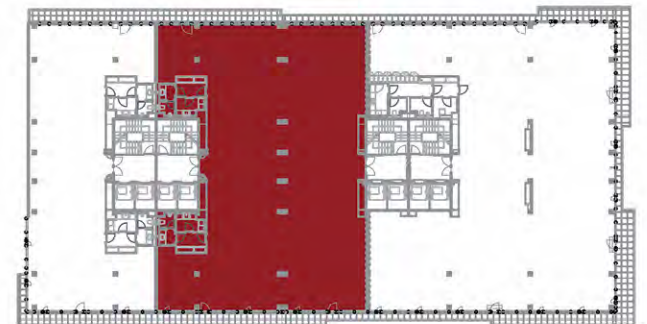
2/2 units - cca 470 m²



1/2 unit - cca 305 m²



1 unit - cca 610 m²







LIMITLESS OPPORTUNITIES FOR EVERYONE
WHO AIMS HIGH





The offered types of organizing the office space, brings out opportunity for various solution depending on the requirements.

Providing all of the unique privileges of Enterprise, our offices are idea of comfort and spaciousness.



YOUR WORK BECOMES YOUR PASSION



10,218 m²
NA

6
levels

257
parking
spaces

A
Class Office

Units from
165 m²





8

elevators



Enterprise offers you opportunity for office space, spread over 6 levels, designed for business. On the area of every level, there is enough space for additional activities, like meeting rooms and spots for the employers to relax and communicate with each other.

**YOUR FULL-TIME
COMFORT**

AN OFFICE WITH A VIEW



Presenting an amazing view to the Vodno mountain or to the city center, there are options for offices from 20m² to 600m².

Open-plan office or individual plan office, you decide what works best for you.

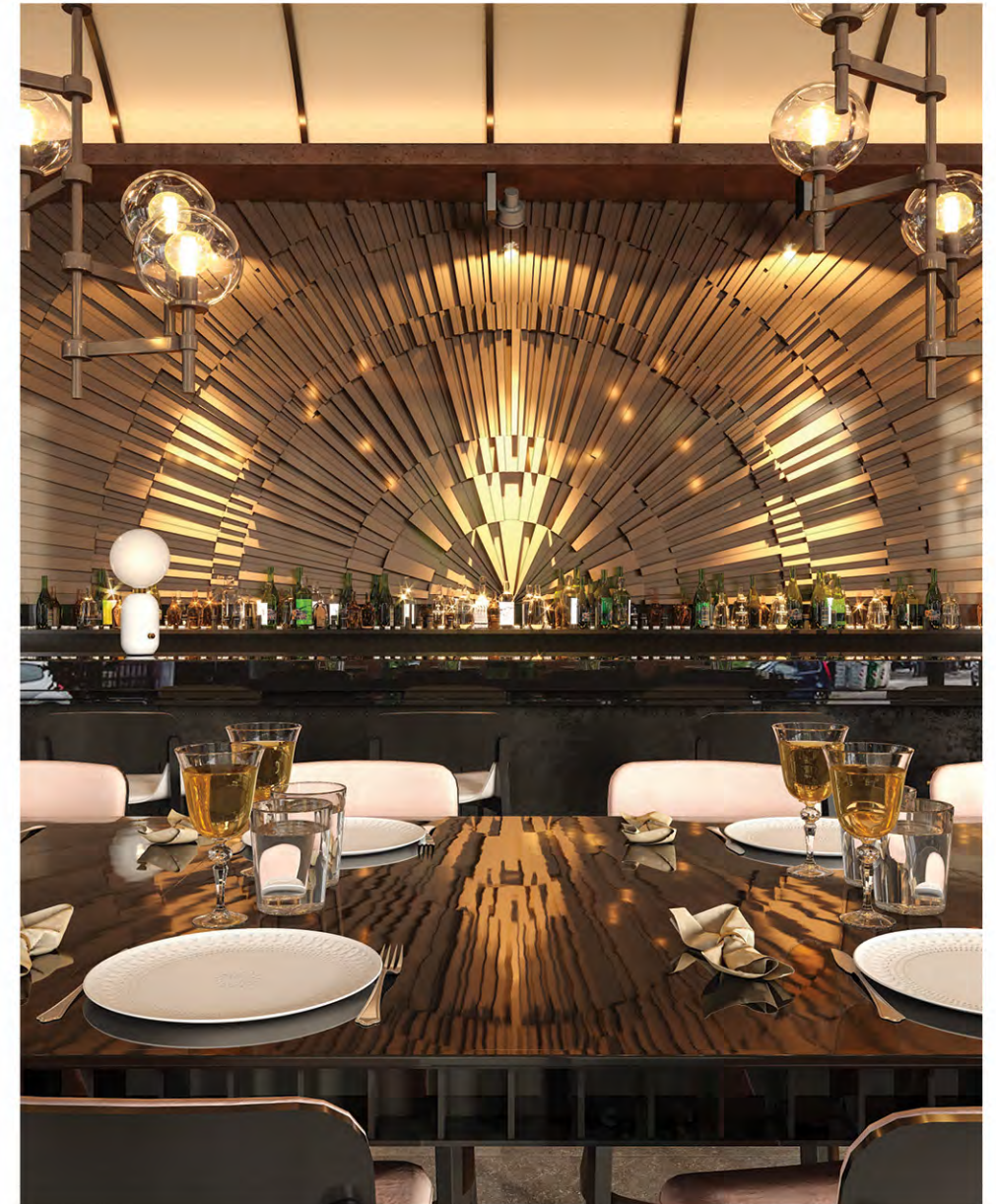




RESTAURANT AND COFFEE BAR

Gastronomy is not just about eating and drinking. Each year millions of people set out to travel the world in search of new flavors.

With flavors that will appeal top the residents as well as the office employees and the people living and working around, the restaurant and coffee bar of Enterprise Skopje will be the favorite place of gourmets.



A UNIQUE PROJECT RISING AT THE HEART OF THE CITY







ENTERPRISE
Skopje

[Handwritten signature]

ENTERPRISE





Handwritten signature

ESS Properties
www.enterpriseoffice.mk